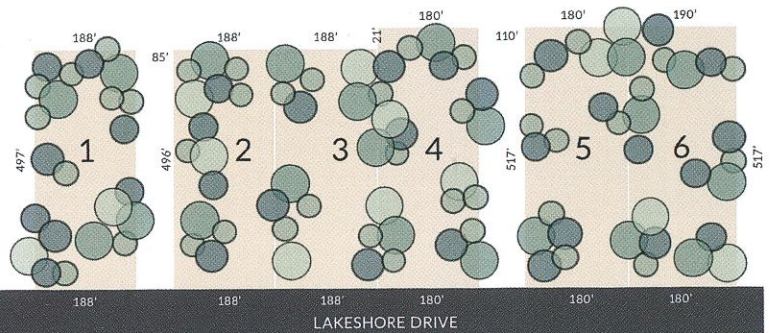


LAKESHORE

RESERVE



- Private, wooded 2-acre homesites
- Gas and Water hook-up available, private septic systems
- Public Lake Michigan access nearby



On North Lakeshore Drive between James and Riley Streets.

This distinctive community is nestled close to the Lake Michigan shoreline, in a wooded setting in desirable Park Township. This coveted northwest Holland location is close to many amenities including one of Michigan's most beautiful state parks, miles of bike paths, public Lake Michigan access, excellent schools and much more.

This uniquely preserved property offers a rare opportunity for a 6-home community providing homeowners with the benefit of large wooded sites combining privacy with lakeshore amenities within reach.

BOUWKAMP
BUILDERS

www.bouwkampbuilders.com
616.355.7644

LAKESHORE
SIGNATURE
PROPERTIES

For more information contact:

Randy Bouwkamp

Cell: 616.836.1262

Office: 616.355.7644

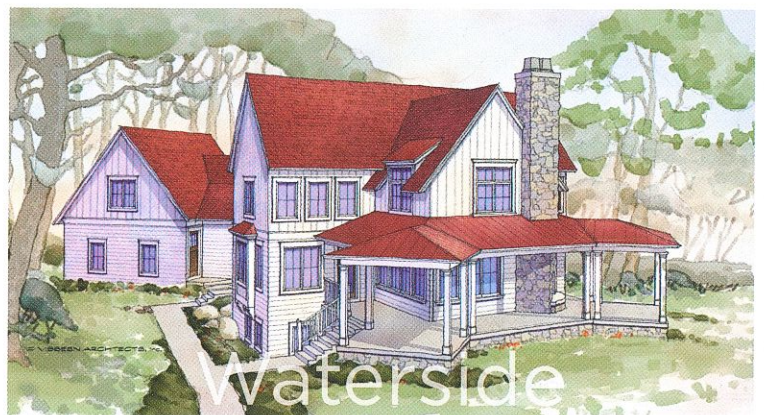
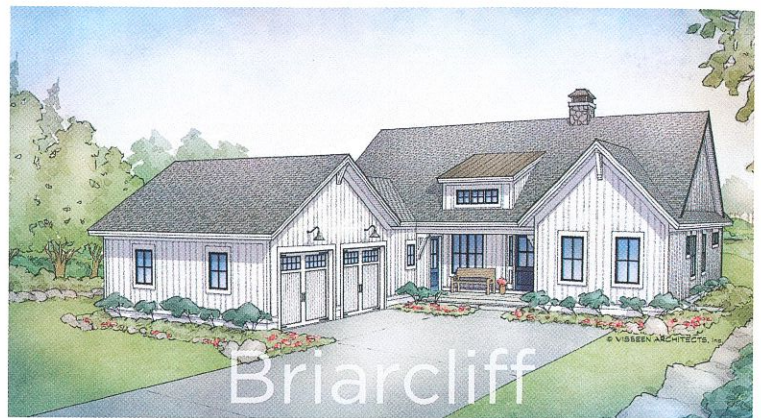
lspmi.com | randy@lspmi.com



VISBEEN
architects

www.visbeen.com
616.285.9901

Sample Home Plans



BOUWKAMP
BUILDERS

LAKESHORE
SIGNATURE
PROPERTIES



VISBEEN
architects